

ARCHITECTURE MALAYSIA

am

2006  
EXHIBITION  
PRODUCT  
SUPPLEMENT

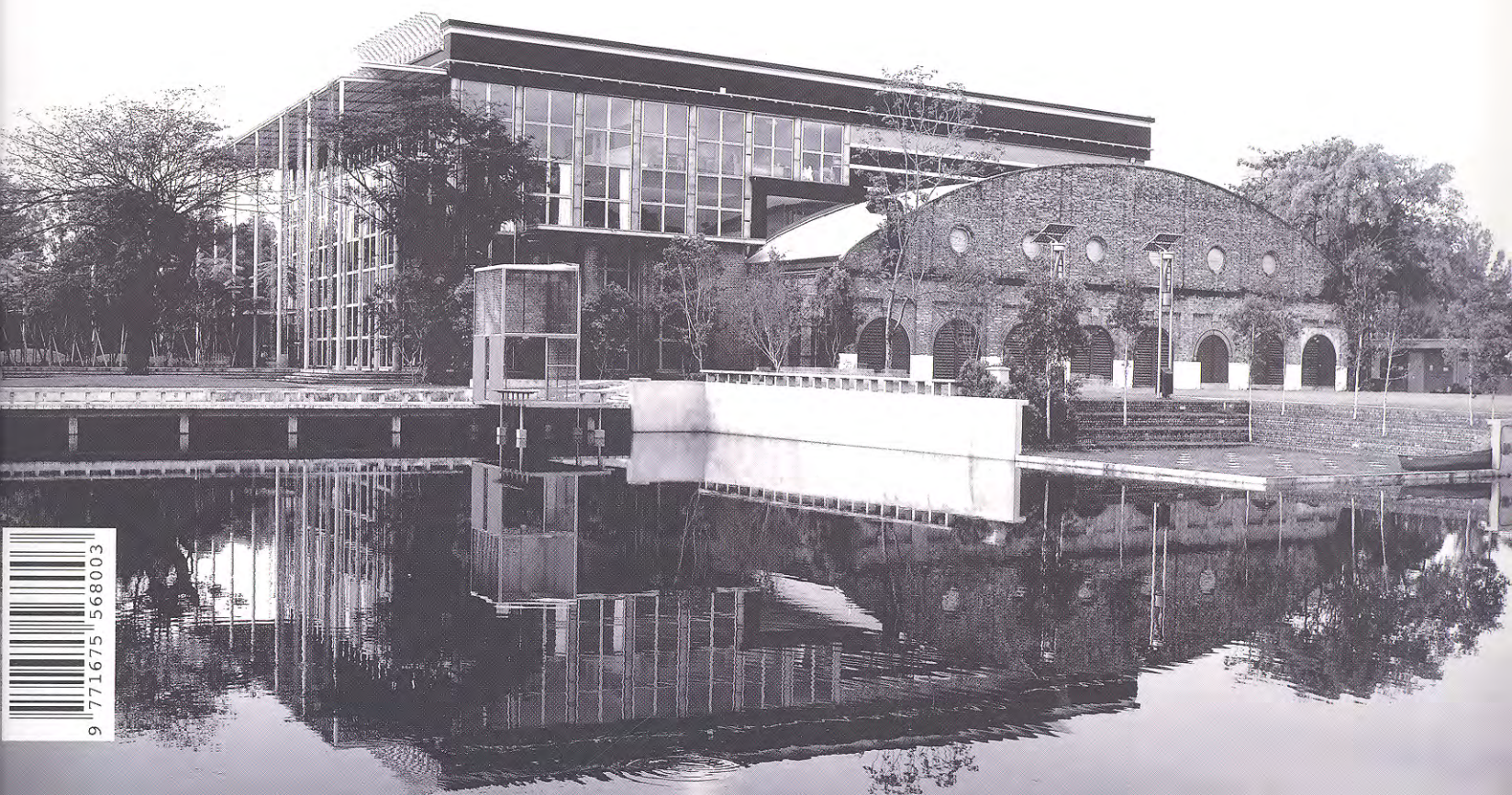
## RENOVATION, CONSERVATION & ADAPTIVE RE-USE

KLPAC, SANDALWOOD, RUMAH KENANGAN HAJI ALWEE BIN SAMAD DAN KETURUNAN,  
ST PETER'S CHURCH, RESTORATION OF THE HAN JIANG ANCESTRAL TEMPLE,  
NO. 8 HEEREN STREET, NO. 81 CHINA STREET, OLD CITY HALL

**FEATURES** BOK HOUSE 1929, MASTERMINDING THE ARCHITECTURAL HERITAGE IN MALAYSIA,  
JOURNEY THROUGH GEORGETOWN, MEASURED DRAWINGS OF PAM CENTRE, THE MUSEUM KOPITIAM

**RESIDENTIAL** PARK 7 RESIDENTIAL SHOWFLAT, LINK 25 GOLFVIEW TERRACE

**INTERIOR** IBRACO CONSTRUCTION OFFICE





# IBRACO CONSTRUCTION OFFICE

DESIGNER DESIGN NETWORK ARCHITECTS SDN BHD

## (DESIGNER'S STATEMENT)

» The project site is a typical shophouse, measuring 6 by 20 metres, and is the office of a well-established construction company in Kuching. Requirements were initially quite simple, due to the nature of work of the staff, who normally operates out of site offices. Since the listing of the company, there was a need for the premise to reflect its stature.

**Response.** The project was approached in the manner of an installation instead of a renovation – to treat the site as an empty landscape and to insert elements and objects into it, thereby providing the facilities and fulfilling the brief.

The clients are contractors who typically worked out of shipping containers on site. The solution therefore, was to design a "container" which is similar in proportion to a shipping container, and fitting the existing office facilities into this volume.

The "container" is constructed out of timber slats, elevated off the ground and glazed with doors on one side to allow entry for both people and light. The elevated nature of this space also allowed new services to be concealed under the flooring, but without hacking into the concrete slab. It also meant that the use of timber flooring is a natural solution.

The dark timber cladding of the container became the backdrop to the


reception, and stops short of the brick wall – reinforcing the illusion of the "container" inserted into the space.

This gap between the container and the wall gives opportunity to insert other elements such as a long continuous bench in white, at once serving the business centre, the conference room and the reception/waiting area.

Finishes are selected for its rugged appeal, such as the rough stone-like floor tiles and the concrete bench at the waiting area. This will ease the maintenance worries of the client, especially when the sub-contractors drop in for a visit from the construction site.

Upstairs, a similar approach is used to house the room offices, with 6 rooms strung along the length of the party wall. The rooms have thick walls with built-in storage and glass sliding doors to allow "borrowed" light from the general area to filter in.

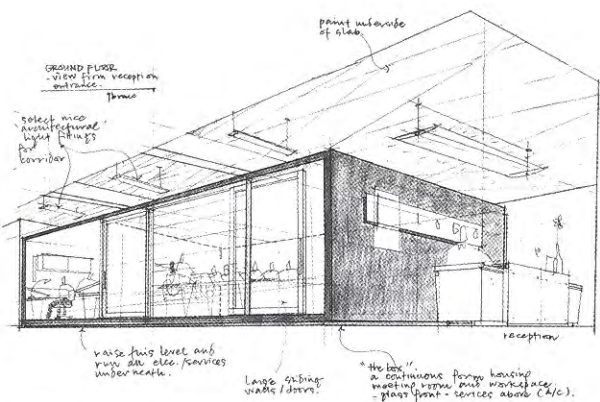
Clustering of rooms in the centre of the space was to allow more natural light into the general office. This seems more democratic, as there are more occupants in the general office than in separate rooms.

Overall, the design solution succeeded in creating a new work space that feels natural and un-contrived, functioning without fuss and yet, commands a second look. 

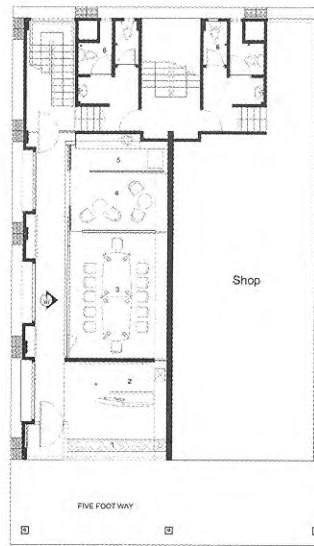
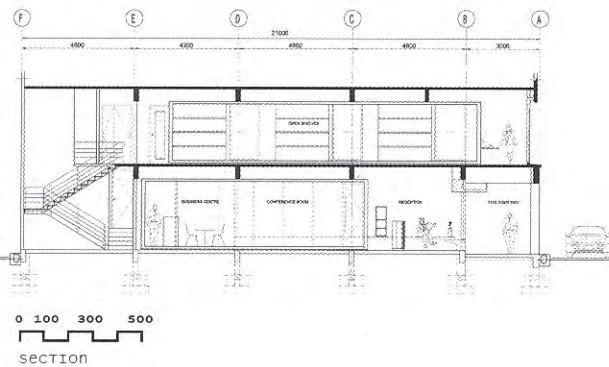
- 1 The offices upstairs are constrained within a central space, and are not connected to existing walls to reinforce the sense of an installation rather than renovation
- 2 The Business Centre shows the restrained color / material palette of the scheme
- 3 The "container" walls are constructed using slatted timber which serves as a backdrop to the reception. It is designed as an "insertion" into the existing space – not quite touching the floor, walls and ceiling







INITIAL SKETCH OF DESIGN CONCEPT



0 100 300 500  
GROUND FLOOR PLAN

- Legend**
- 1 SEATING AREA
  - 2 RECEPTION
  - 3 CONFERENCE ROOM
  - 4 BUSINESS CENTRE
  - 5 PANTRY
  - 6 TOILET
  - 7 FILE ROOM
  - 8 GENERAL OFFICE
  - 9 MANAGEMENT OFFICE

**ARCHITECT/INTERIOR DESIGNER**  
Design Network Architects Sdn. Bhd.

**PROJECT TEAM**  
Wee Hii Min, Thang Suh Chee

**CLIENT**  
Ibraco Bhd.

**m&e engineer**  
CH Engineering

**CONTRACTOR**  
Stampin Timber and Construction Sdn Bhd



Reception as glimpsed from five foot way - the entry door is set back to create a tiny vestibule. The very Spartan seating area is compensated by the warm light at the receptionist's station