

ARCHITECTURE MALAYSIA

am

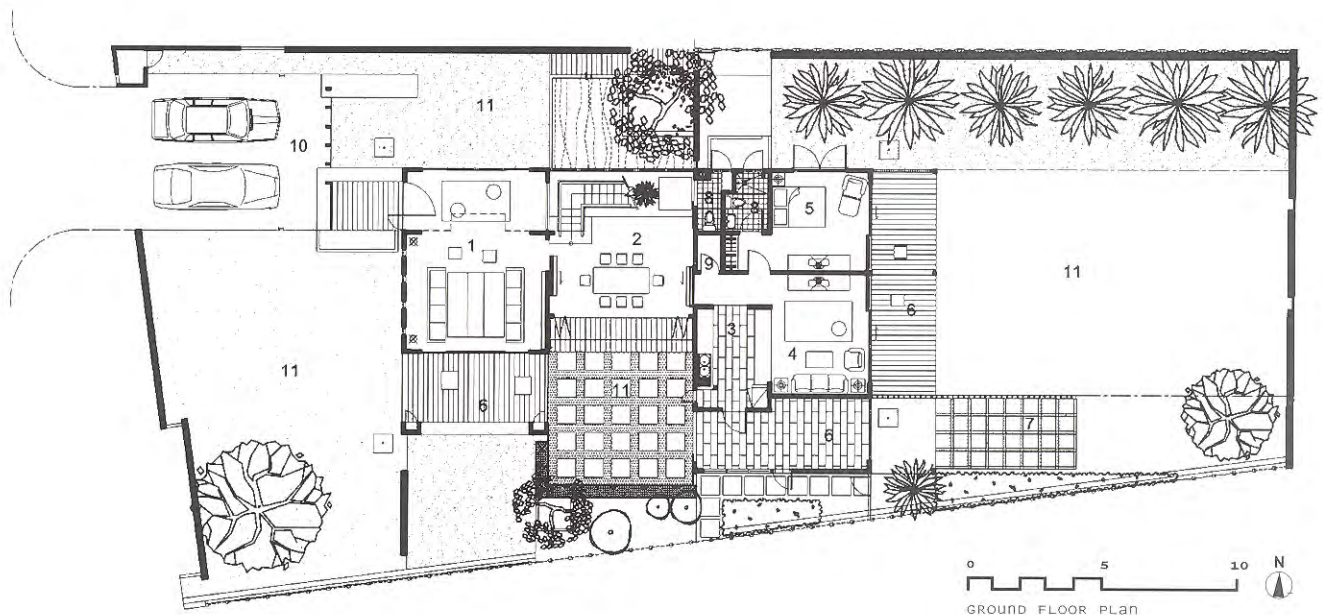
SECTION 12 HOUSE, A HOME EVOLVED.
TROPICANA HOUSE, HASHIM RESIDENCE,
BUNGALOW AT TAMAN BUKIT SAGA,
KHOO HOUSE, WOOL RESIDENCE,
CANOPY HOUSE, THE FUTURE OF HOUSES

RESIDENTIAL HOUSE 9, HIJAUAN KIARA
INTERIORS ALLIANCE ALIVE!

ARCHITECTS,
HOUSES

2006
EXHIBITION
PRODUCT
SUPPLEMENT

9 771675 568003



Interior space showcasing the central steel stairway
 View showing the south and west elevations of the house; the screen enclosure
 provides privacy for the bathrooms and conceals air-cond condensers.



Khoo House

(ARCHITECT'S STATEMENT)

To begin. There are always great expectations when an architect begins the process of building his own house. We expect them to create a "masterpiece" with his home; a home that is well proportioned, with clever details, and is environmentally sensitive with an innovative layout. We also expect the house to reflect his lifestyle and personality, and to be built within a strict budget. Perhaps this is why architects take so long to build their own houses. It also explains why most architects never do.

Layout. The Khoo house is a compact dwelling of 232 square metres that is situated on a long rectangular plot of 0.2 acres in quiet suburban Kuching.

The house is laid out in two blocks with a link between them. The link is slightly narrower in size, allowing the owner an opportunity to create a

courtyard and reflection pool.

The front block houses the living room and a master bedroom upstairs, while the rear block has the family room, guest room and kitchen with the children's bedrooms upstairs.

The heart of the house is the dining room that overlooks the courtyard on one side and the reflection pool on the other. It is the most transparent part of the house, allowing the house to breathe easily with its clever manipulation of air circulation during the day, while it emits a warm glow at night.

Proportions. The planning of the house in two blocks allows the roof form to be articulated easily and to reflect the spaces that it shields.

While the floor height is not as high as most private homes, it is designed in conjunction with well-proportioned

elevations. The architect also took into consideration that the vaulted ceiling on the first floor will provide the required volume for internal spaces. This makes for a pleasant surprise to the visitor – the light-filled spaciousness and volume is not instantly apparent in its modest exterior form.

Environment. The architect's pre-occupation with blurring the line between the inside and outside resulted in the various terraces and patios that compliment the living, dining and family rooms.

The idea of inviting nature into the house is taken one step further (and literally) by allowing the water to flow from the pool into and underneath the steel stairs with timber treads – making it appear to float above the pool, without interrupting the flow of air.

